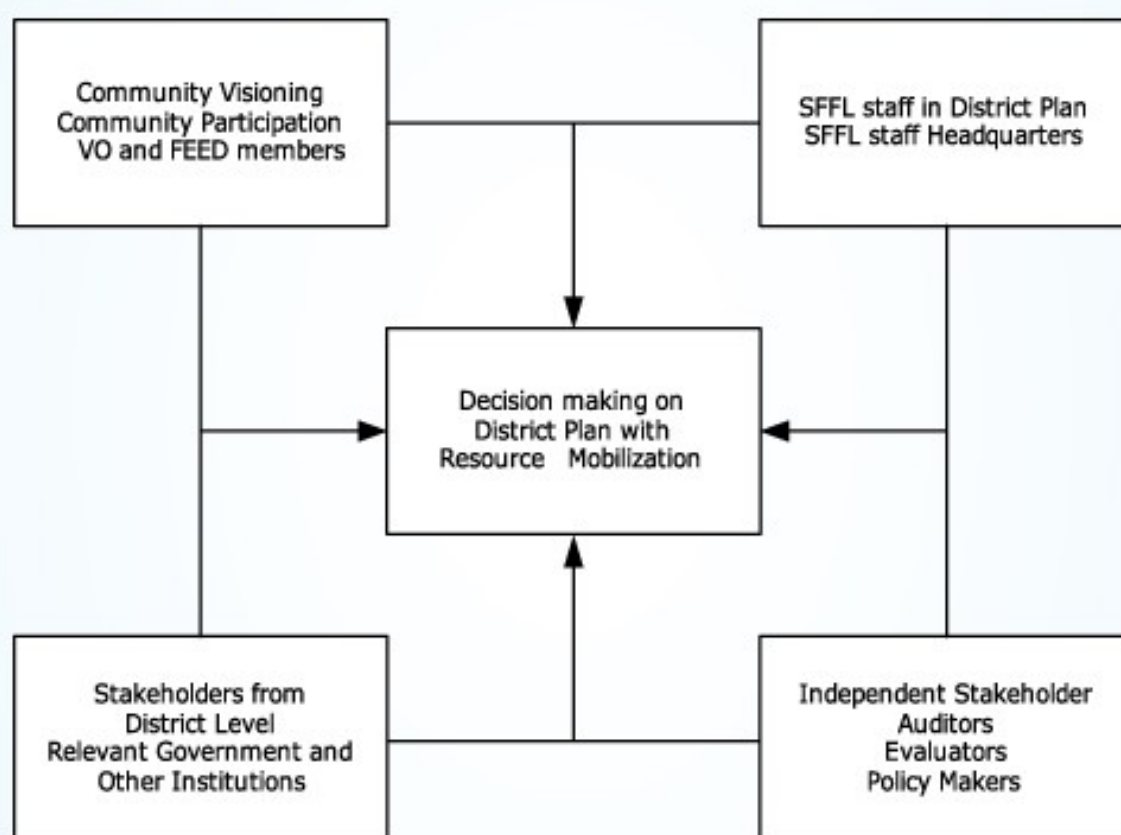


The working model of Small Fishers Federation on Empowerment of women in fishing and farming communities

3.1. Member's participation is supreme to all the activities

The active participation of the members of the village organizations is needed for the planning, implementing and monitoring of all activities. They are represented in the Federation through the SERCs. The majority of the members in SERC Board are from the fishing community. The Federation hands out the tools and instruments, but the members themselves are in charge and have to participate actively for successful results. The final responsibility lies with them. The Federation practices co-management principles in programme implementation for its members' empowerment process as illustrated below.

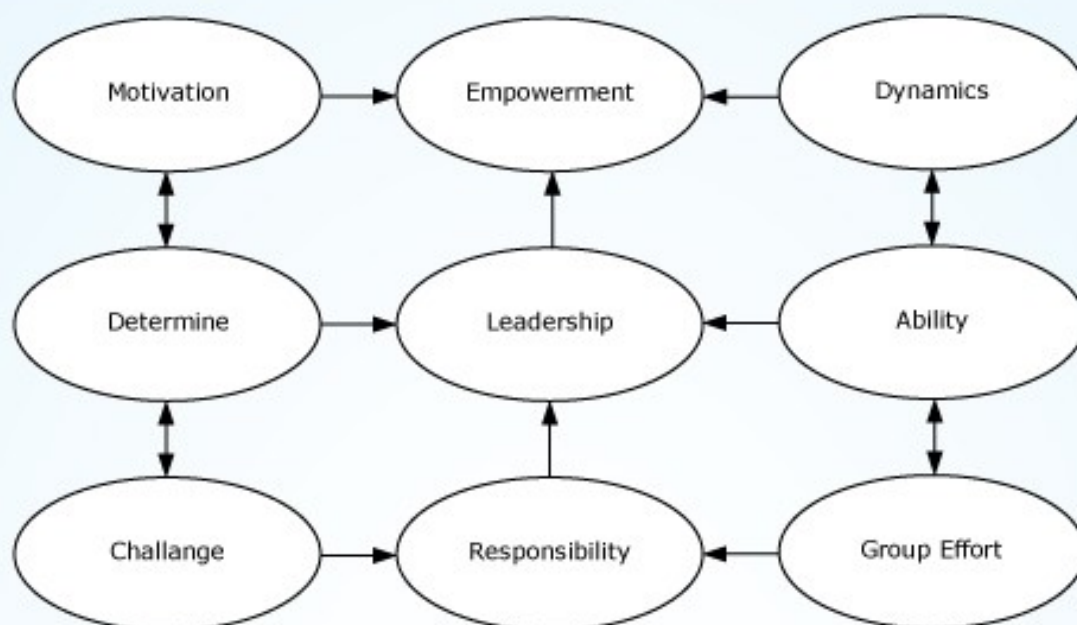
Co-Management



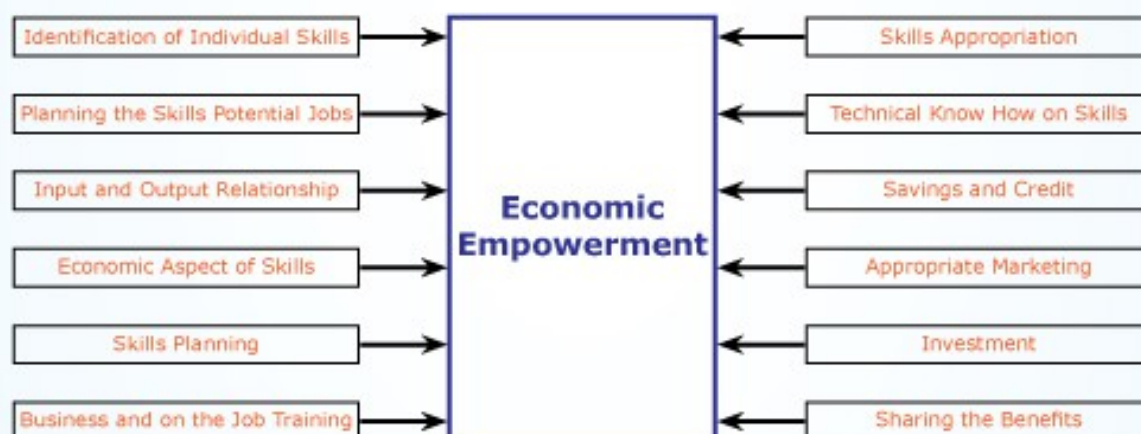
3.2. Social and Economic Empowerment Process

Adopting these key operational policies, the Federation activates socialization among its members as the main community empowerment tool of the Federation. The socialization and economic empowerment process are followed up with identification of skills of its members and harnessing their skills for social and economic advancement of the fisher folk community.. The socialization process and economic enhancement are built through awareness activities, one-week development workshops and three to six months skill development training and village committee system. In this connection, primary target groups are women and youngsters. The socialization and economic empowerment are for entire family through building the capacity of women. The socialization and economic empowerment process of the Federation are illustrated as follows

Social empowerment Process



Economic empowerment Process

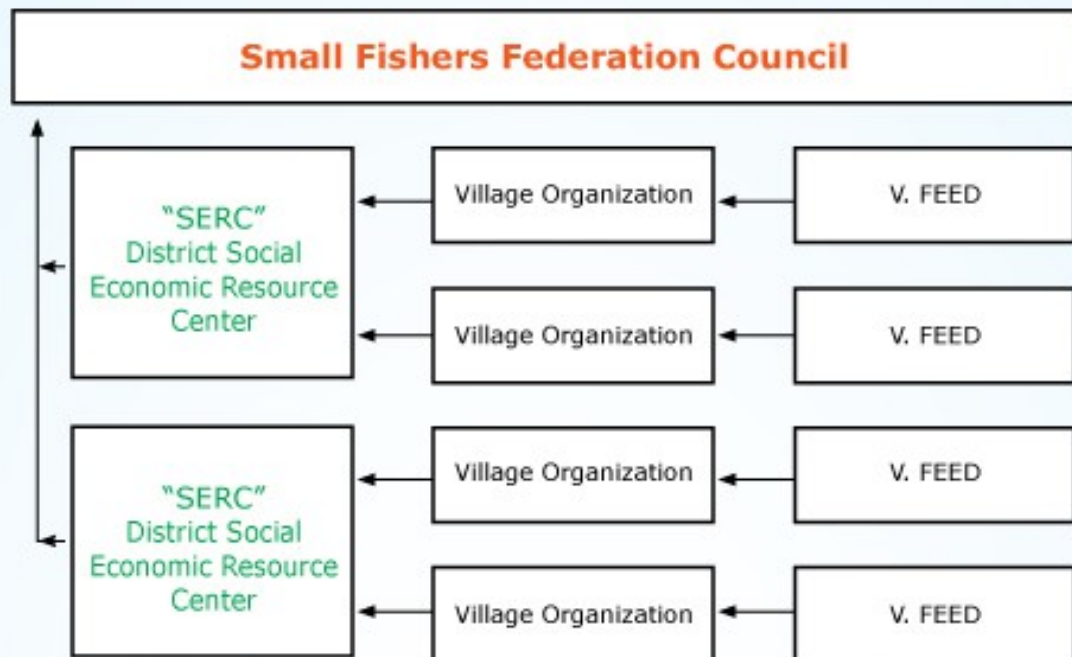


• The Federation has applied this model for district development activities.



Beneficiary women of Small fishers federation

❖ The Federal Structure of Small Fishers Federation



Sustainable Development

Sustainable development which meets the needs of the present without compromising the ability of future generations to meet their own needs. This definition calls for business to acknowledge its responsibility for its impact on society and the environment. From a business perspective, sustainable development encompasses three linked elements:

Economic

Profitability, wages and benefits, resource use, labor productivity, job creation, expenditures on outsourcing and human capital, etc. The economic dimension includes, but is not limited to, financial information.

Environment

Impacts of processes, products and services on air, water, land, biodiversity, human health, etc.

Social

Workplace health and safety, community relations, employee Relations, labor practices, business ethics, human rights, working conditions, etc.